

County Council 26 May 2016

| Agenda Item | Page No |
|---|---------------|
| 7 ANNUAL APPOINTMENTS OF LEADER TO CABINET List of appointments attached | 3 - 4 |
| 8 ANNUAL REPORT ON COMMITTEE PROPORTIONALITY AND APPOINTMENTS List of committee appointments attached | 5 - 8 |
| 14 ANNUAL DEBATE Presentations attached: <ul style="list-style-type: none">• Leader's presentation• Keynote speaker's presentation | 9 - 40 |

The Leader's Annual Appointments

This report sets out the executive appointments made by the Leader for the municipal year 2016/17 to the following positions: Cabinet Members and Deputy Cabinet Members.

Cabinet

Leader – Martin Tett

Deputy Leader & Cabinet Member for Health and Wellbeing – Mike Appleyard

Children's Services – Lin Hazell (Lead Member)

Community Engagement & Public Health – Martin Phillips

Planning & Environment – Warren Whyte

Resources – John Chilver

Education & Skills – Zahir Mohammed

Transportation – Mark Shaw

Deputies

Health and Wellbeing – Wendy Mallen

Children's Services – Jean Teesdale

Community Engagement & Public Health – Margaret Aston

Planning & Environment – Netta Glover

Resources – David Watson

Education & Skills – Noel Brown

Transportation – Paul Irwin

Appendix 2 – Appointments to Council Committees FINAL

| Committee | Nominations |
|-------------------------|---|
| Development Control (8) | <p><i>6 Conservative Group, 1 LDI&BL Group, 1 UKIP Group</i></p> <p>Lesley Clarke OBE (C) Netta Glover (C) Roger Reed (C) Brian Roberts (C) David Shakespeare (C) David Martin (C)</p> <p>Chaudhary Ditta (LDI&BL)</p> <p>Andy Huxley (UKIP)</p> |
| Pension Fund (6) | <p><i>5 Conservative Group, 1 LDI&BL Group</i></p> <p>John Chilver (C) Trevor Egleton (C) Peter Hardy (C) David Martin (C) Richard Scott (C)</p> <p>Steve Lambert (LDI&BL)</p> |
| Regulatory & Audit (8) | <p><i>6 Conservative Group, 1 LDI&BL Group, 1 UKIP Group</i></p> <p>Tim Butcher (C) Bill Chapple (C) Trevor Egleton (C) Peter Hardy (C) David Martin (C) David Schofield (C)</p> <p>Avril Davies (LDI&BL)</p> <p>Alan Stevens (UKIP)</p> |
| Rights of Way (8) | <p><i>6 Conservative Group, 1 LDI&BL Group, 1 UKIP Group</i></p> <p>Margaret Aston (C) Patricia Birchley (C) Carl Etholen (C) Katrina Wood (C) Bill Chapple (C) Noel Brown (C)</p> <p>Robin Stuchbury (LDI&BL)</p> <p>Chris Adams (UKIP)</p> |

| | |
|--|---|
| <p>Senior Appointments and Bucks Pay Award (7)</p> | <p><i>5 Conservative Group, 1 LDI&BL Group, 1 UKIP Group</i></p> <p>Mike Appleyard (C) Tim Butcher (C) John Chilver (C) Martin Tett (C) Warren Whyte (C)</p> <p>Avril Davies (LDI&BL)</p> <p>Brian Adams (UKIP)</p> |
| <p>Select – Children's (11)</p> | <p><i>9 Conservative Group, 1 LDI&BL Group, 1 Independent Group</i></p> <p>Margaret Aston (C) Patricia Birchley (C) Janet Blake (C) Dev Dhillon (C) Paul Irwin (C) Wendy Mallen (C) David Watson (C) Katrina Wood (C) Bill Bendyshe-Brown (C)</p> <p>Robin Stuchbury (LDI&BL)</p> <p>Phil Gomm (Ind)</p> |
| <p>Select – Health (11)</p> | <p><i>8 Conservative Group, 1 LDI&BL Group, 1 UKIP Group, 1 Independent Group</i></p> <p>Margaret Aston (C) Patricia Birchley (C) Noel Brown (C) Roger Reed (C) Brian Roberts (C) Carl Etholen (C) David Shakespeare (C) Ruth Vigor-Hedderly (C)</p> <p>Julia Wassell (LDI&BL)</p> <p>Brian Adams (UKIP) Chris Adams (UKIP) *</p> <p>* Gifted from the Independent Group</p> |
| <p>Select – Finance (8)</p> | <p><i>6 Conservative group , 1 LDI&BL group, 1 UKIP group</i></p> <p>Bill Chapple (C) David Martin (C) David Shakespeare OBE (C) Dev Dhillon (C) Netta Glover (C) David Schofield (C)</p> <p>Steven Lambert (LDI&BL)</p> |

| | |
|--|--|
| | Alan Stevens (UKIP) |
| Select – Transport, Environment & Communities (8) | <p><i>6 Conservative Group, 1 LDI&BL Group, 1 Independent Group</i></p> <p>Tim Butcher (C) David Carroll (C) Lesley Clarke OBE (C) Jean Teesdale (C) Angela Macpherson (C) Brian Roberts (C)</p> <p>Avril Davies (LDI&BL)</p> <p>Phil Gomm (Ind)</p> |

Buckinghamshire Fire Authority

The County Council has 12 places on the Fire Authority which, applying the rules on proportionality, results in the following distribution of seats across the groups. The nominations received from political groups in line with proportionality are as follows:

1. **David Carroll (C)**
2. Adrian Busby (C)
3. Lesley Clarke (C)
4. Netta Glover (C)
5. Wendy Mallen (C)
6. Roger Reed (C)
7. David Schofield (C)
8. **Jean Teesdale (C)**
9. David Watson (C)
10. Steven Lambert (LDI&BL)
11. Andy Huxley (UKIP)
12. Phil Gomm (Independent Group)

[Note: Names highlighted in bold show changes for 2016/17]

The AGM Debate

Martin Tett

Leader of the Council

Bucks 2021: Building our future



The future will not be like the past

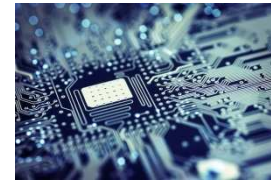
Funding challenges



Population and demographics



Technology



Rising demand and complexity



2021

Legislative changes
(Queen's Speech)



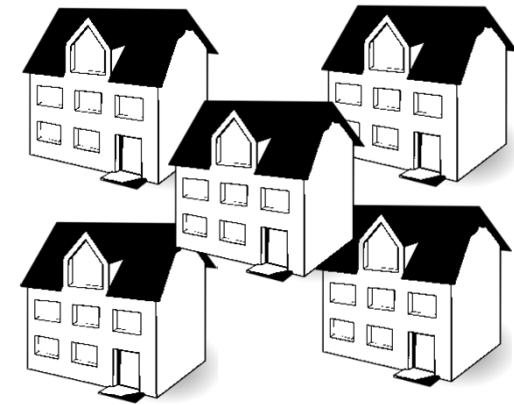
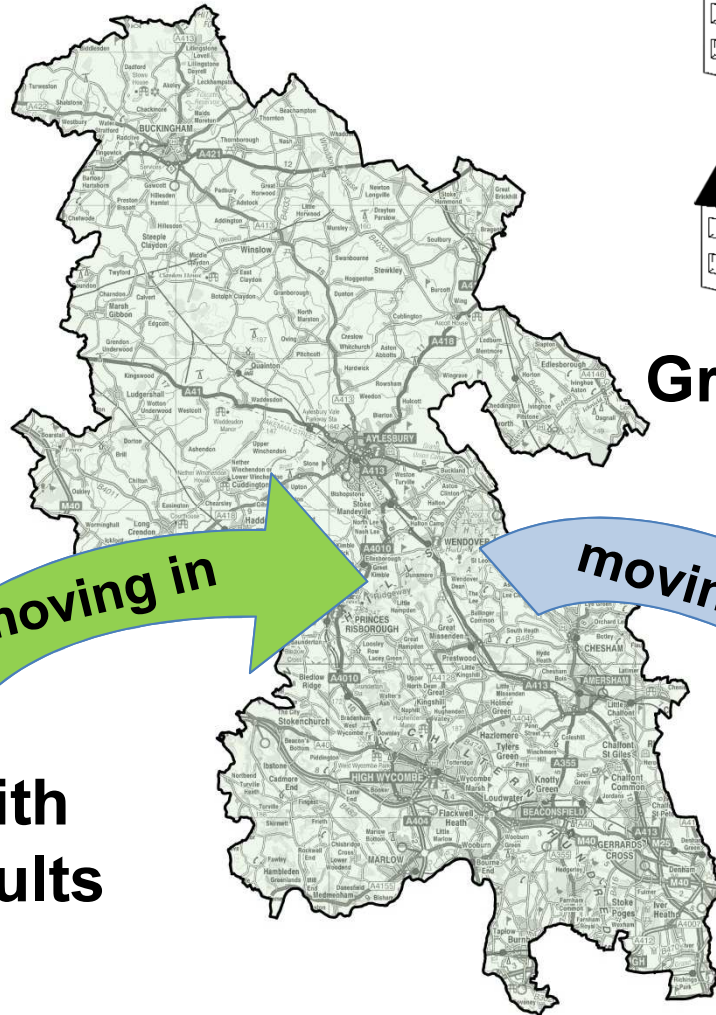
'No change' is not an option



A different Buckinghamshire...

**547,000
residents
In 2021**

**+100k
since 1991**



Growth from housing

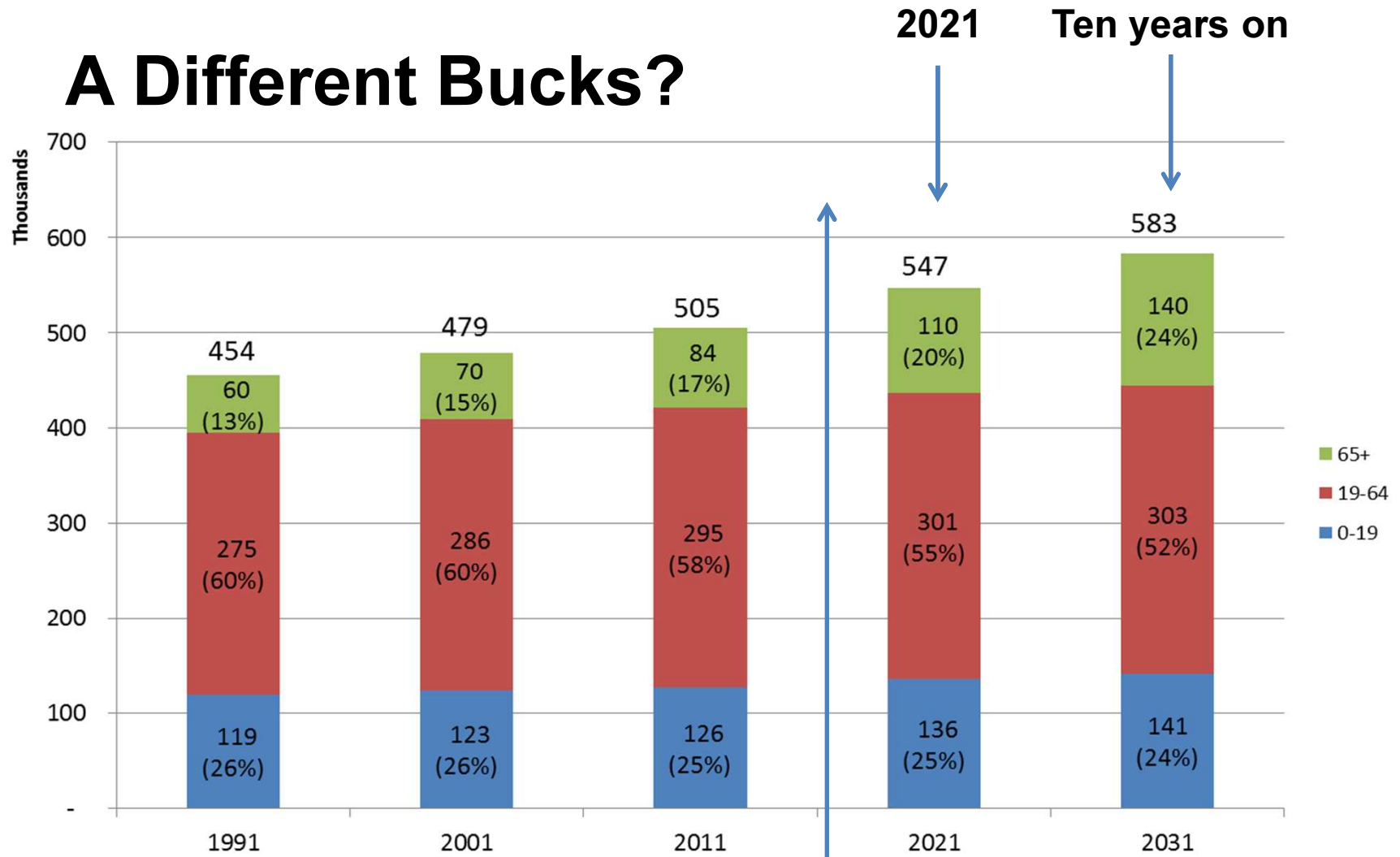
moving in

moving out

**Families with
children, adults**

School leavers

A Different Bucks?



We are here →



Rising demand and complexity...



Older people (20% by 2021)

Disabilities and health problems

Ethnic diversity

Lowest socio-economic groups



People of working age

Wealthy people

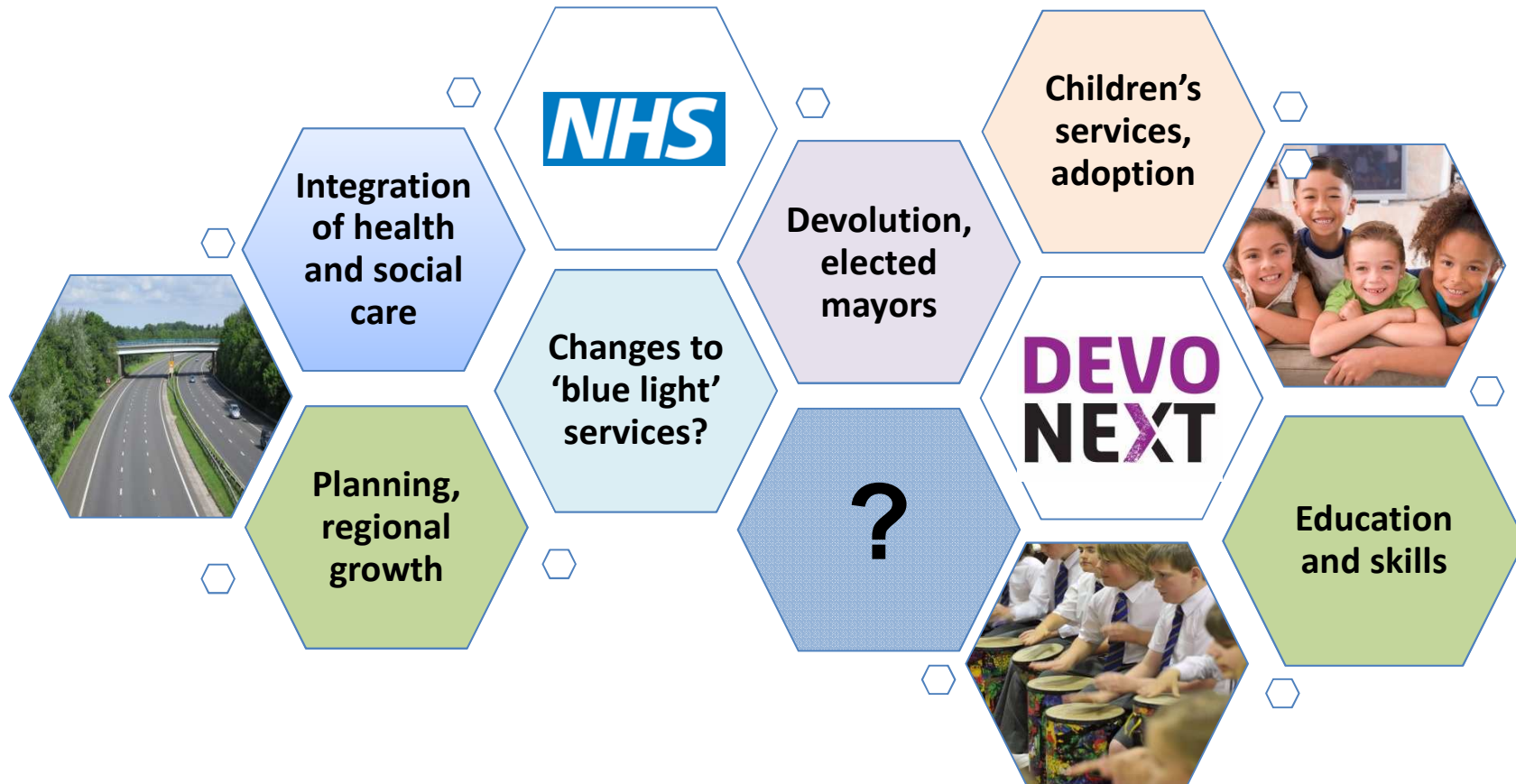


‘Money, money, money...’

- Self-sufficient by 2018/19
- Return of all business rates to local government
- NHS is under enormous financial and demand stress
- More funding to be ‘bid for’ via LEPs etc
- Insufficient funding for growth infrastructure?



The changing legislative and public service landscape...

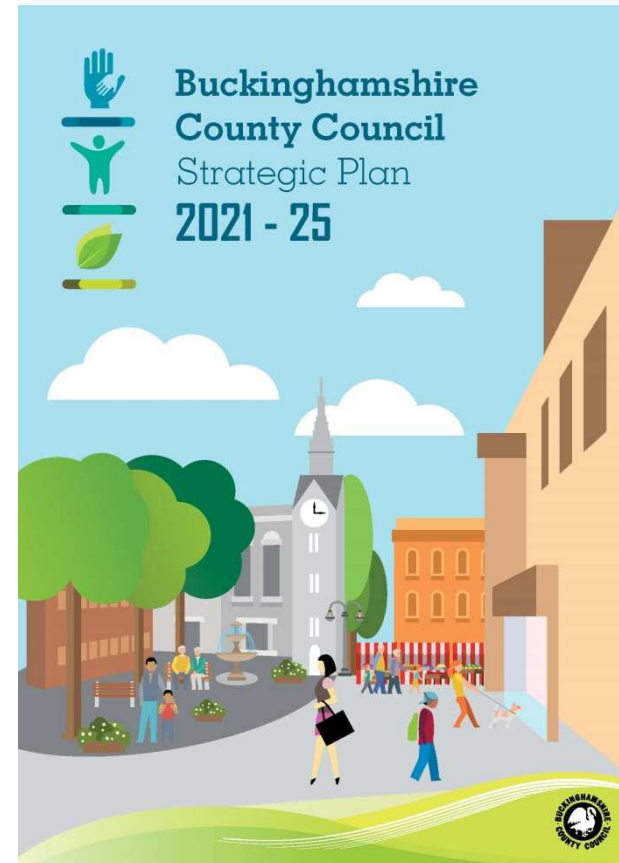
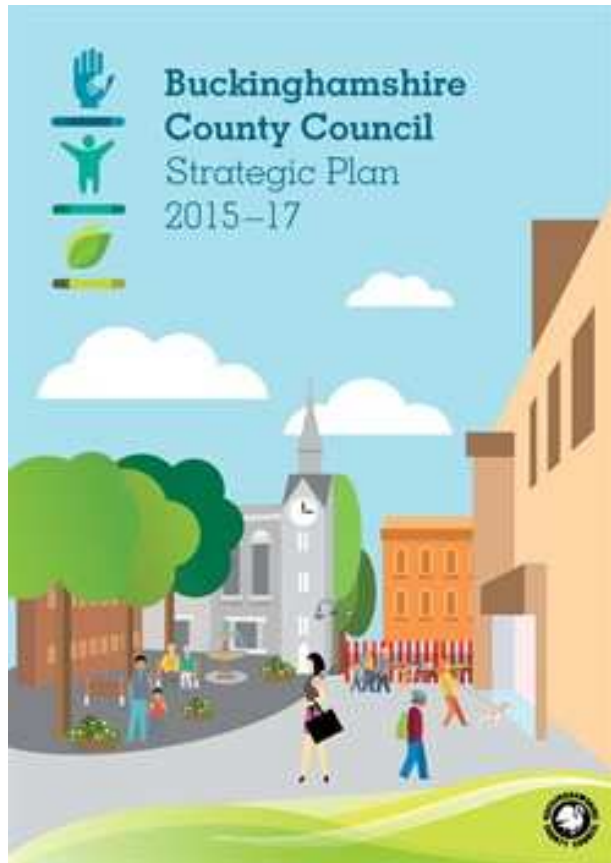


By 2021?

- A self-financing Council (by 2018/19)
- Every service transformed and digital by design
- More partnership working and service integration
- More service hubs and co-location?
- Modernisation of local government?
- Effective regional working



'An even stronger voice for Bucks'





19

What Integration means for our Buckinghamshire Health & Social Care System

**Louise Patten RGN DN BSc MBA
Chief Officer, NHS Aylesbury Vale CCG**

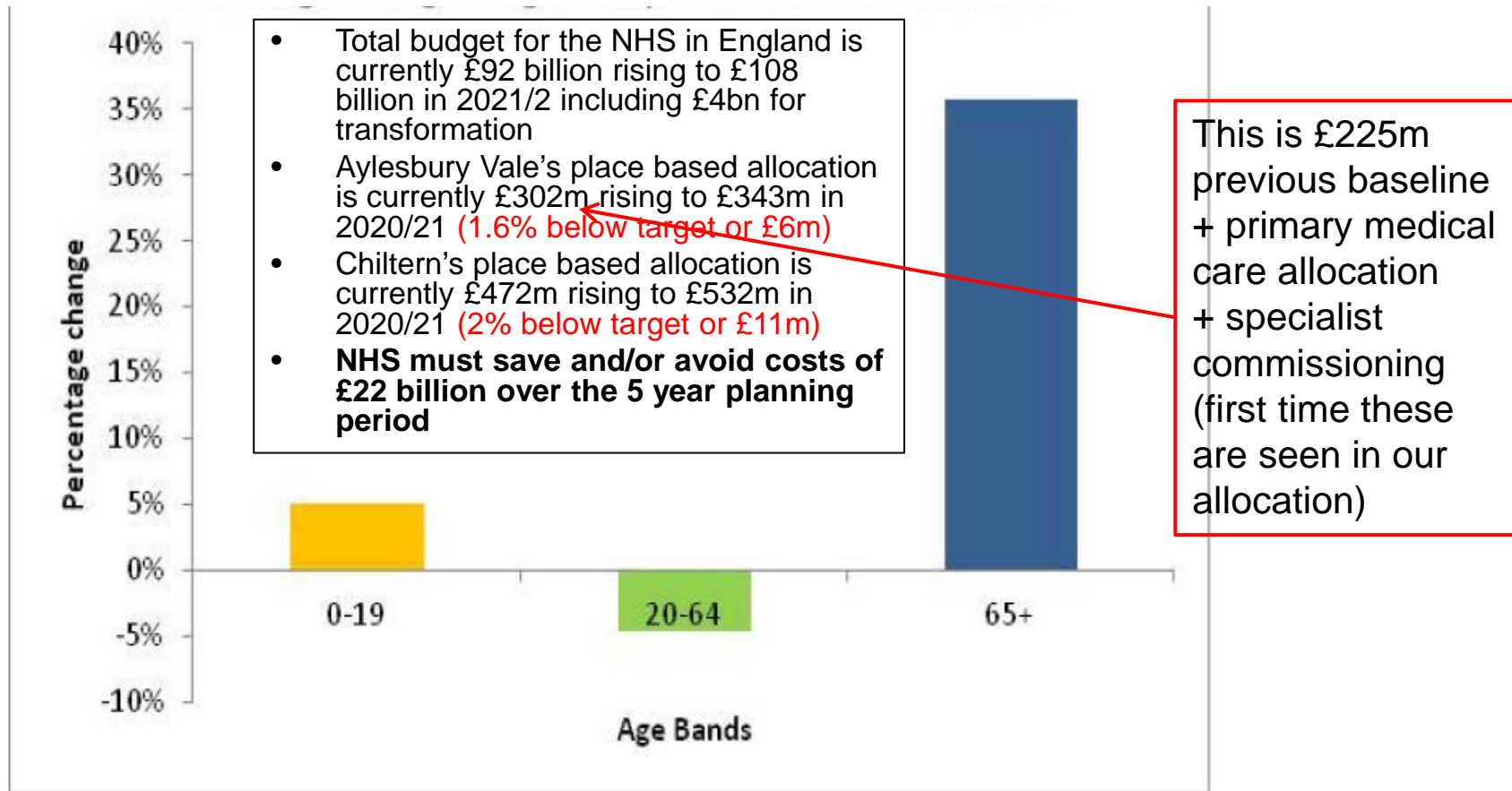


What are our local Health Challenges?

20

NHS Allocations vs Projected Growth

Percentage change in Age Groups, 2011 - 2015



STP: Integrated Working is Essential

Sustainability & Transformation Plans (STPs) will be the single application & approval process for transformation funding for 2017/18 onwards

2016/17 resources largely already allocated to support organisations which are seriously financially challenged already

22

Buckinghamshire, Oxfordshire & Berkshire West 'footprint' budget is currently £2.5 billion rising to £3 billion in 2020/21 including £100m for transformation

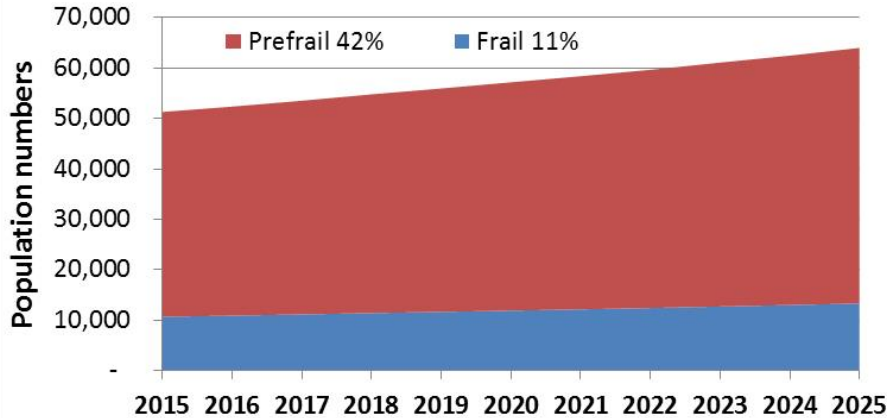
Buckinghamshire's notional fair share of transformational £s is in the region of £30 million on a weighted capitation basis

Must be linked to delivering new models of care e.g. *Vanguard* models such as Multi Specialty Community Providers, Primary & Acute Care Systems



ESTIMATES OF FRAIL ELDERLY POPULATION - PROJECTIONS

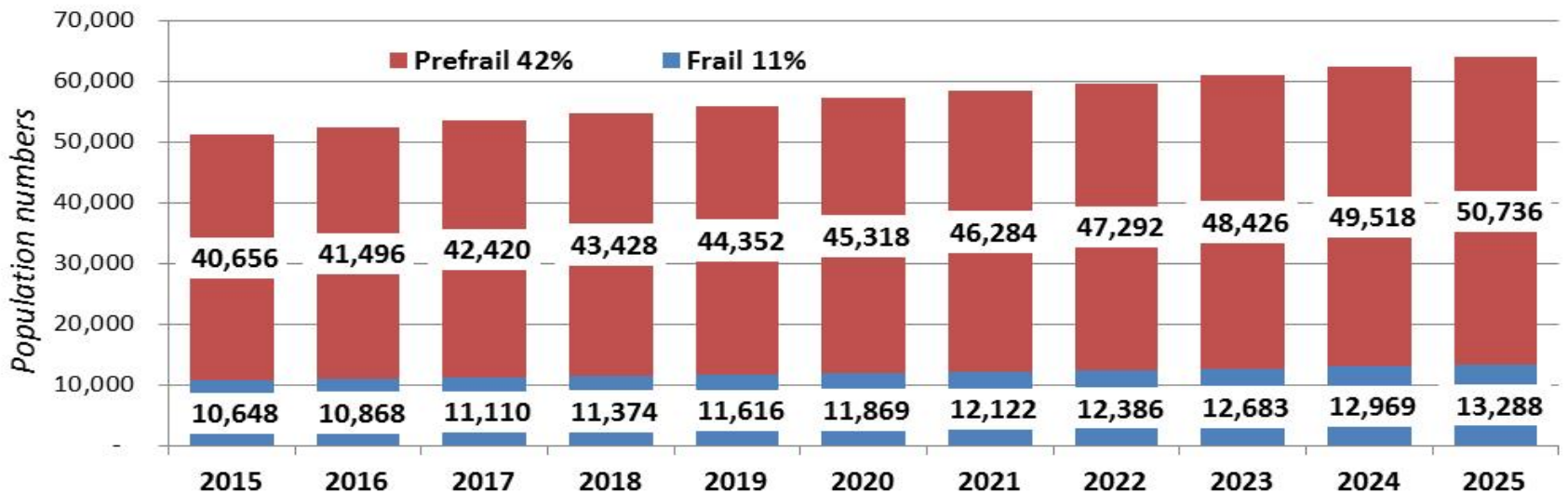
Projection of frail and pre-frail population in Buckinghamshire: 2015 - 2020



1. In 2015, around 10,700 Bucks residents are estimated to be frail elderly meaning those with more than one long term condition or those with a condition that needs assistance with activities of daily living (approximately 11% of the elderly population*)
2. By 2020, the estimated frail elderly population is expected to rise to 12,000 means a rise of 1300. Evidence shows that the frail elderly population is 3 times more likely to end up in a hospital compared to the non-frail older population aged 65 and over.
3. Around 42% elderly population are considered as pre-frail which equates to around 45,000 people pre-frail in Bucks by 2020 compared to 40,000 in 2015

23

Projection of Frail and pre-frail population in Buckinghamshire from 2015-2020

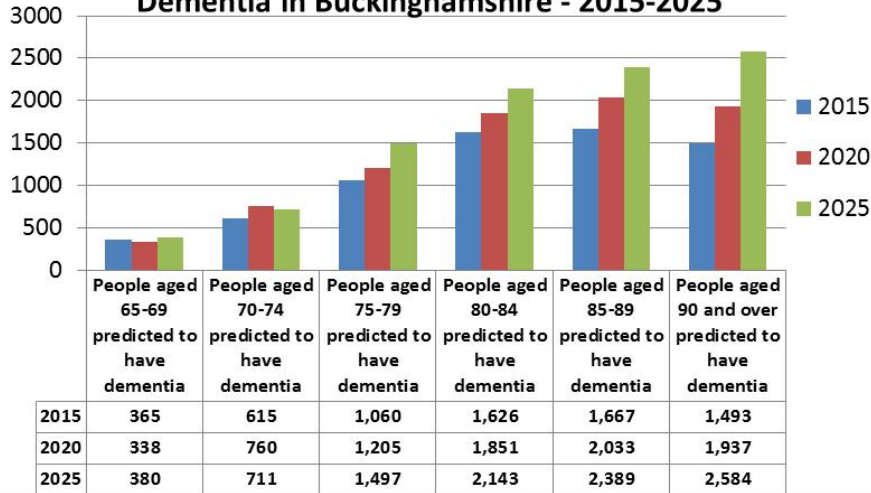


*Reference: Collard et al (2012). Prevalence of frailty in community-dwelling older persons: A systematic review. J Am Geriatr Soc; 60: pp1487-92.

PROJECTIONS OF LONG TERM CONDITIONS

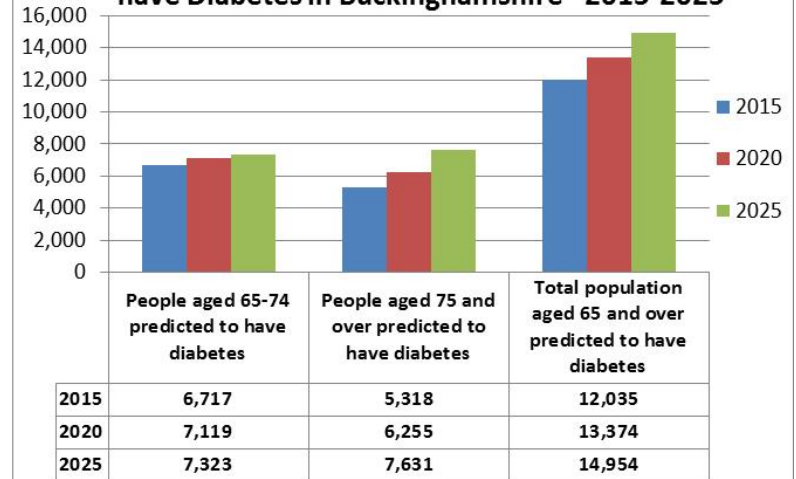
DEMENTIA

Projections of people aged 65+ predicted to have Dementia in Buckinghamshire - 2015-2025



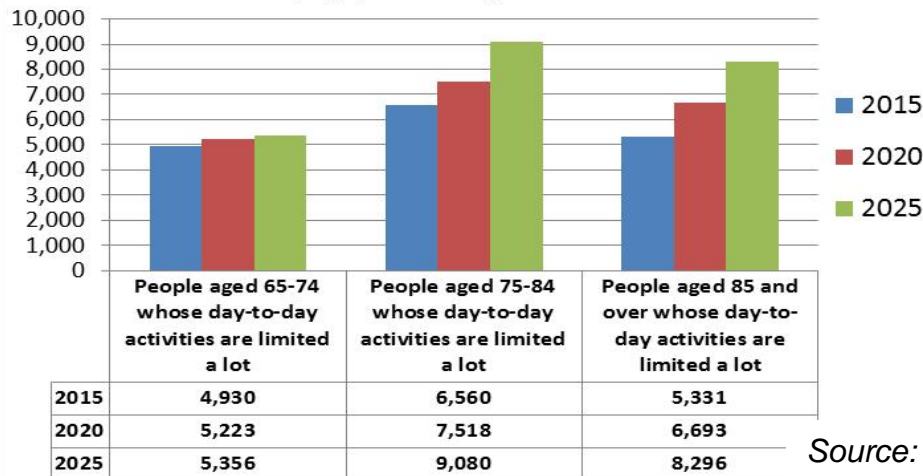
DIABETES

Projections of people aged 65+ predicted to have Diabetes in Buckinghamshire - 2015-2025



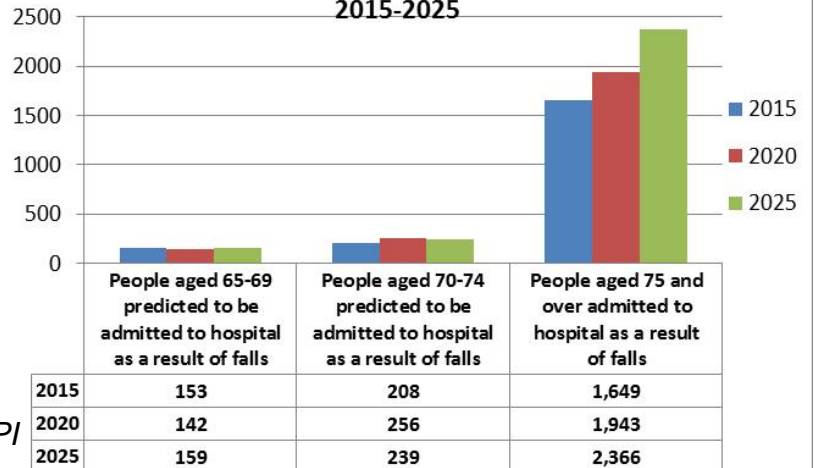
Limiting Long-term illness

Projections of people aged 65+ with a limiting long-term illness by age, in Buckinghamshire: 2015-2025



FALLS

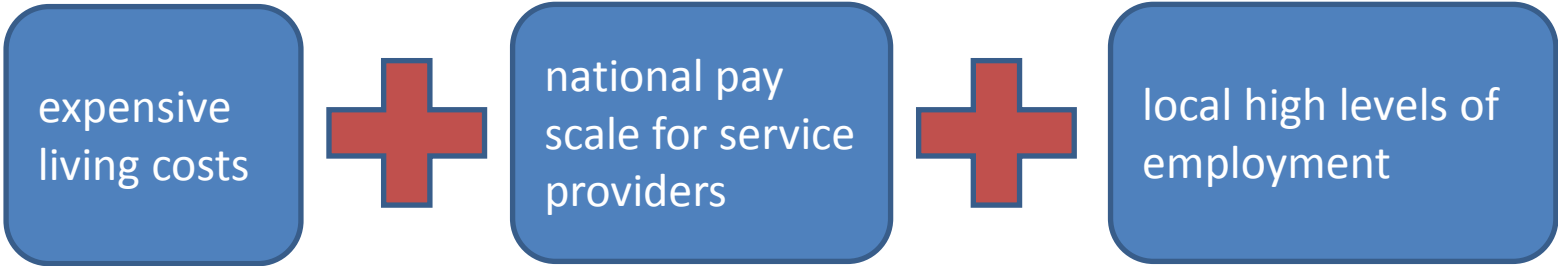
Projections of people aged 65+ predicted to be admitted to hospital due to falls in Buckinghamshire: 2015-2025



Source: POPPI



Unique Workforce Challenges...



25



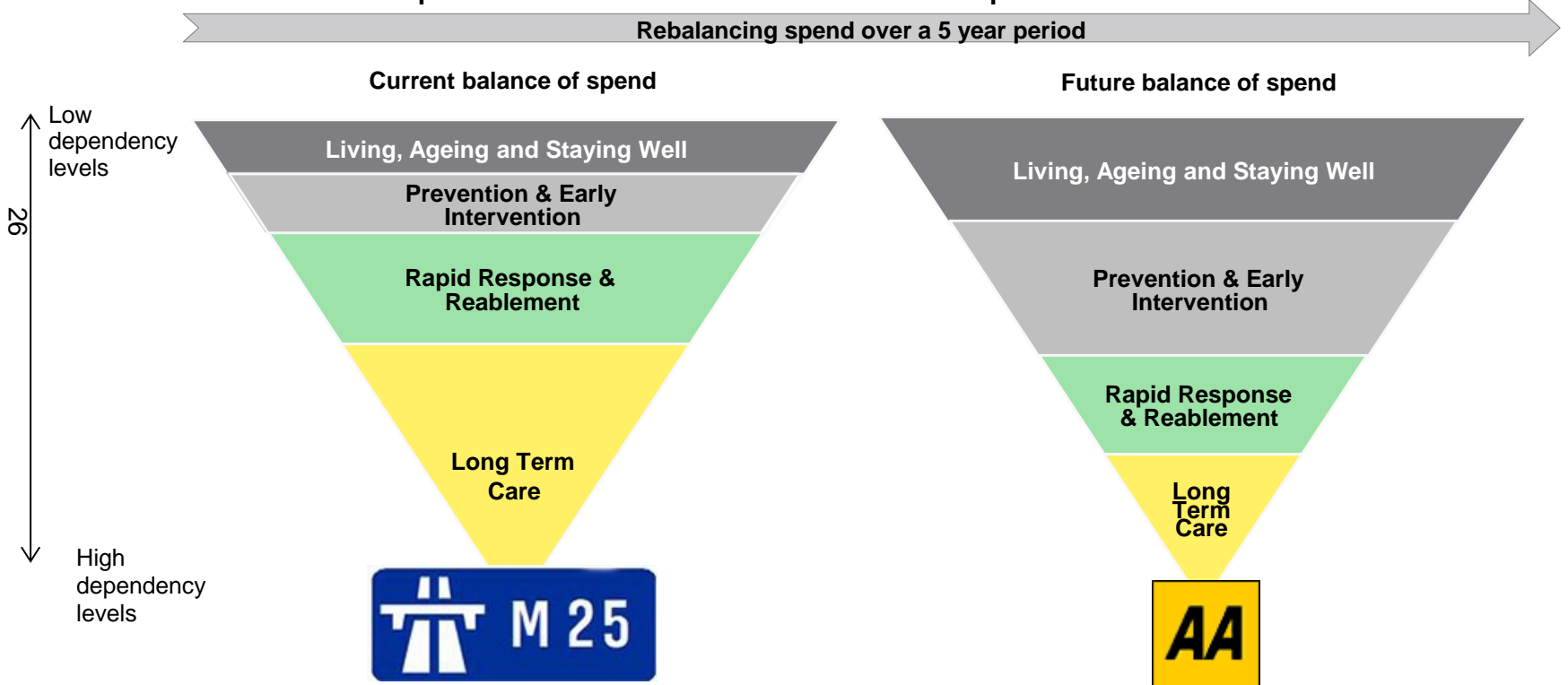
Low numbers of available health and social care professionals

Buckinghamshire's 'share' of financial challenge

Buckinghamshire must save and/or avoid costs of £205 million over the 5 year planning period across the health & care system

Low risk relative to elsewhere in the NHS in England

Focus is to **reduce** spend on **bed-based** care into prevention & **care at home**



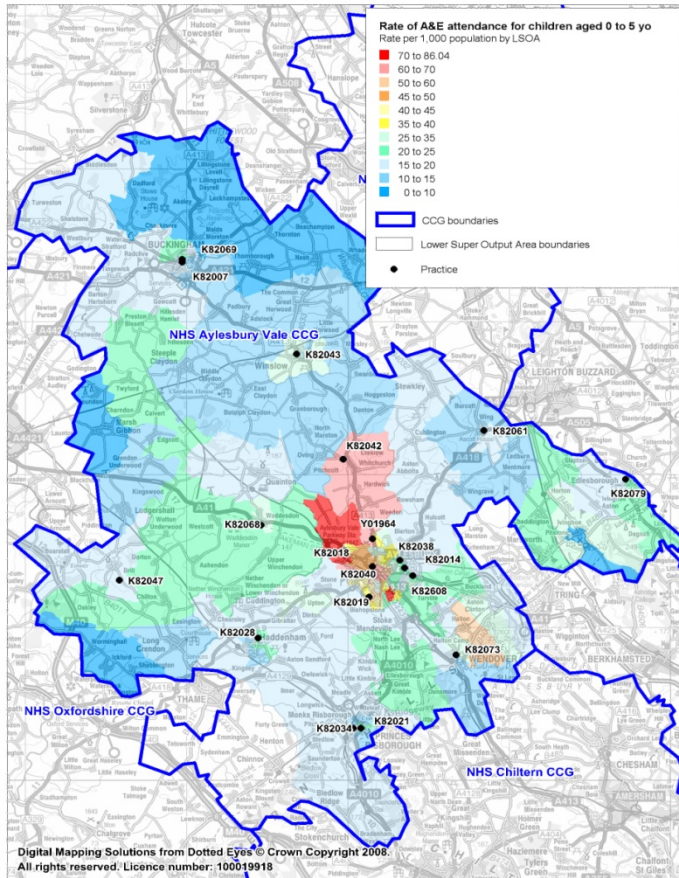


How can the Integration Agenda help us to achieve System Sustainability?

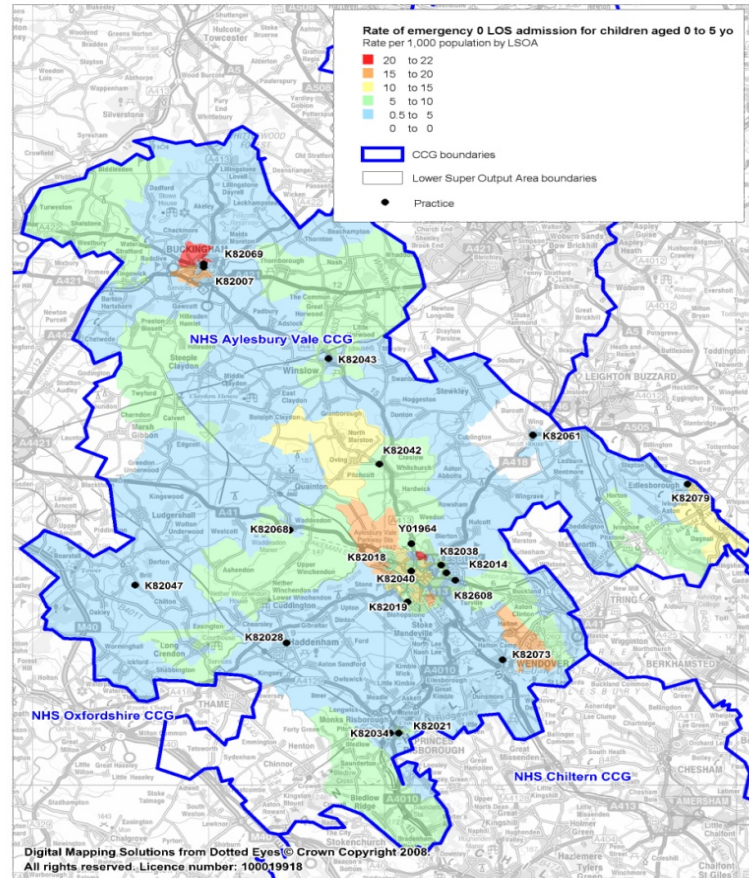
27

1. Know Our Population:

Rate of A&E attendance for patients aged 0 to 5 years old in NHS Aylesbury Vale CCG by LSOA (Feb 2012 - Jan 2013)



Rate of emergency zero length of stay admission for patients aged 0 to 5 years old in NHS Aylesbury Vale CCG by LSOA (Feb 2012- Jan 2013)



28

2. Encouraging Self Management

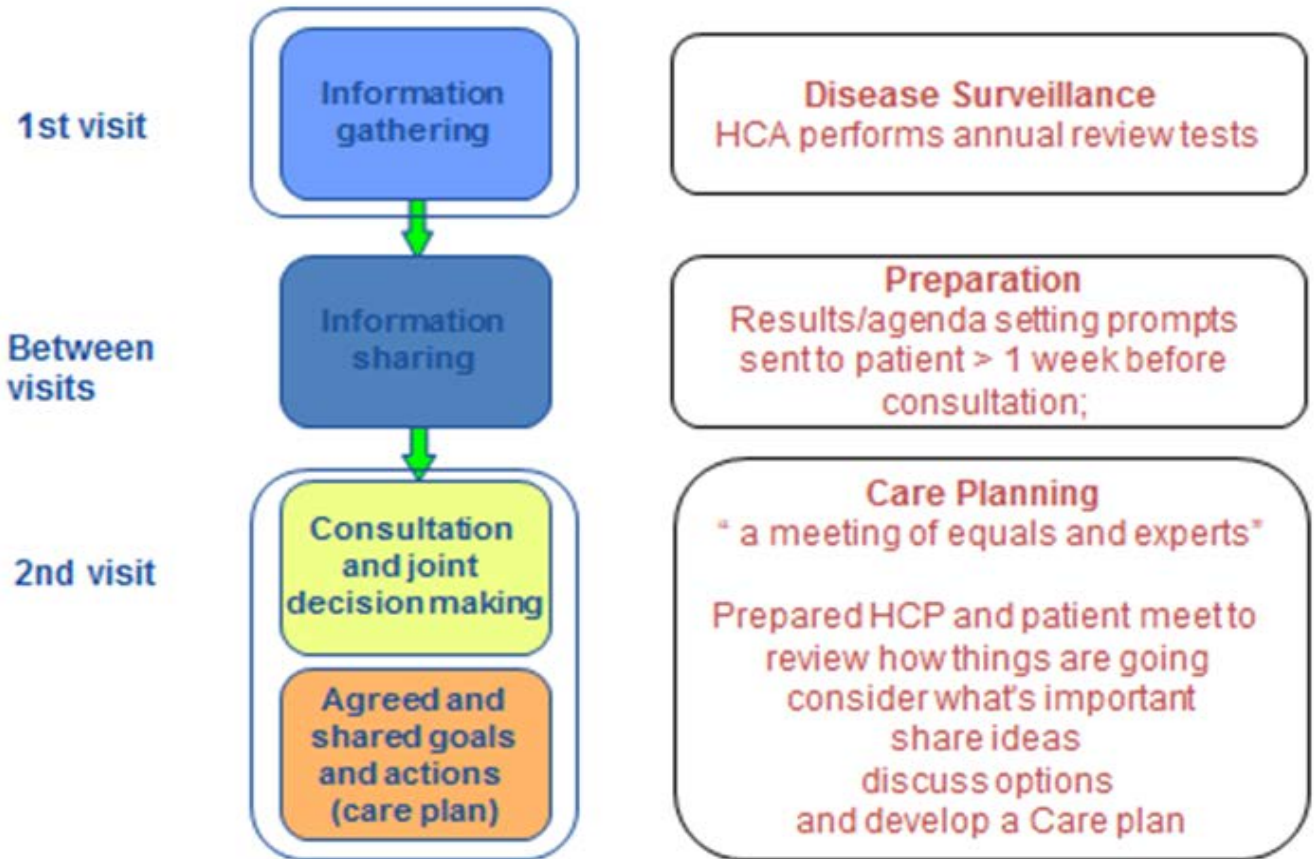


House of Care model

The House of Care emphasises that effective care and support planning (CSP) consultations rely on four elements working together in the local healthcare system

Changing GP Consultations

30



3. Changing Commissioning Mindset: current

Mr Smith has COPD and a painful hip that limits his mobility

He is referred to the orthopaedic consultant and a hip replacement is undertaken

After rehabilitation he is home but it will be 3 months before he gets back to previous levels of activity



Current commissioning:

- Commissioners plan for specific activity levels (emergency admissions, hip replacements)
- Quality markers based on mortality rates, infection control, patient satisfaction with hospital experience

Outcomes based commissioning: future

After discussion with his nurse and GP, he decides he wants to keep his bridge club visits twice a week and to be as pain free as possible for maximum mobility

His treatment was physio and OT for safe movement around the house, together with a robust pain control plan



Commissioning outcomes:

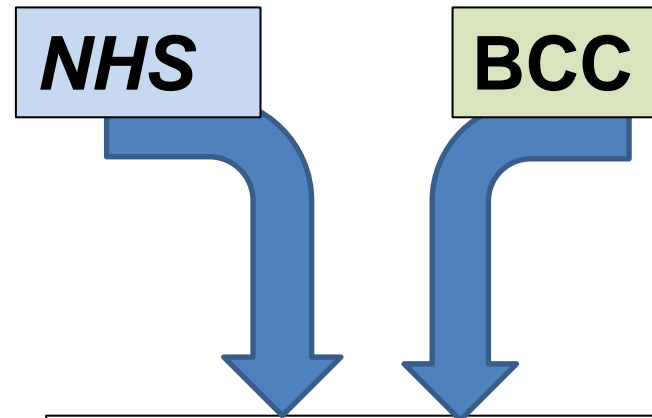
Paying for health & care services based on rewarding the outcomes that are important to the service user

...a value based approach

4. Developing our Integration Agenda:

Success....

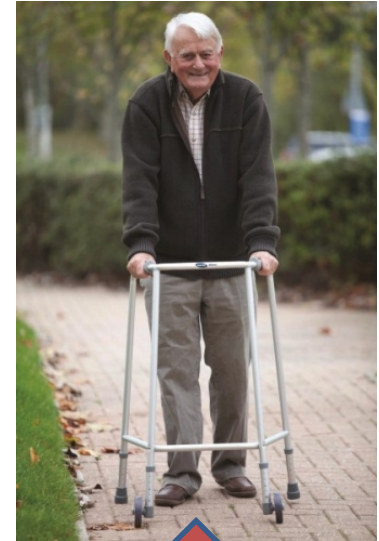
- Child & Adolescent Mental Health Services (CAMHS)
- Better Care Fund
- Trusted Assessments in Aylesbury



Next Steps....
Pooled Budgets
and shared risk
Driving quality **UP**
And cost **DOWN**

Integrated Commissioning for Quality

Understanding
the patient's
quality of life
before
admission,
setting targets



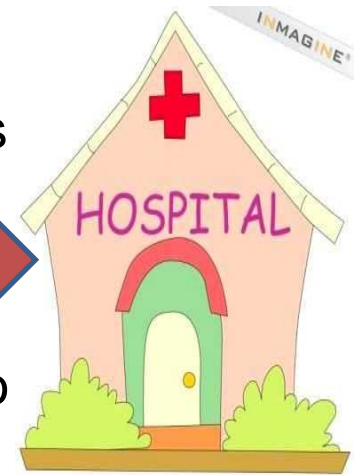
Increased independence
Reduced social care requirements
Reduced need for care home admission

Integrated Commissioning – Emergency Services



Ambulance service struggles at times to reach targets – little time to stop and look for alternative care solution

Hospitals have poor control over their 'supply' of patients from GPs and Ambulance calls



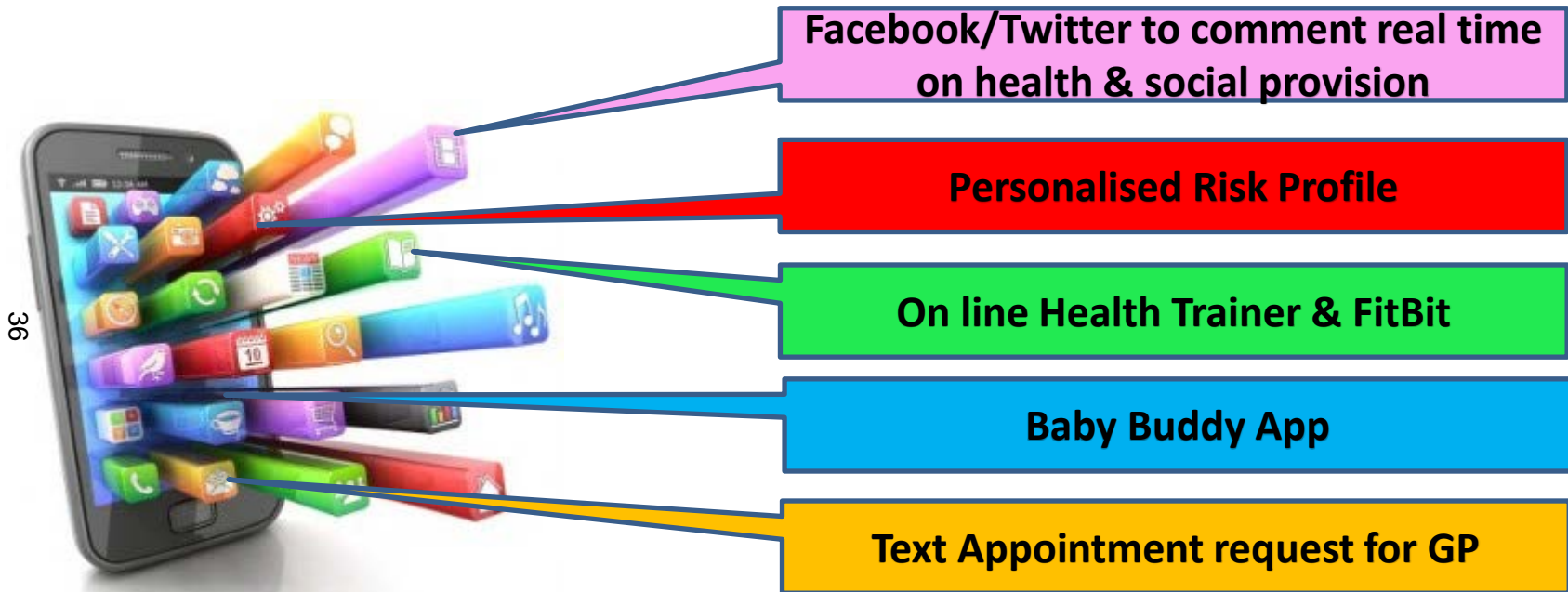
May have to admit because no transport home or it's late at night



What would a local emergency service look like?



5. Encouraging Self Help: attitudes are changing...



“Future health services will not revolve around consultants in hospitals. Instead, they will facilitate the active involvement of users themselves in providing their own care...” *Lord AraDazi*

6. Assistive Technology

- Patients store own data on their cloud;
- Shared patient notes – consent obtained at time of consultation
- **Facetime, video** consultations
- **Fit bits** and linkage to health support

Independent living technology:

- **Automatic lights** - prevent trips and falls
- **Automated shut-off devices** for gas, water
- **Special plugs for depth, temperature**
- **Fall sensors** that can register if a person has fallen.
- **Tracking devices** – absence from a chair, leaving the house



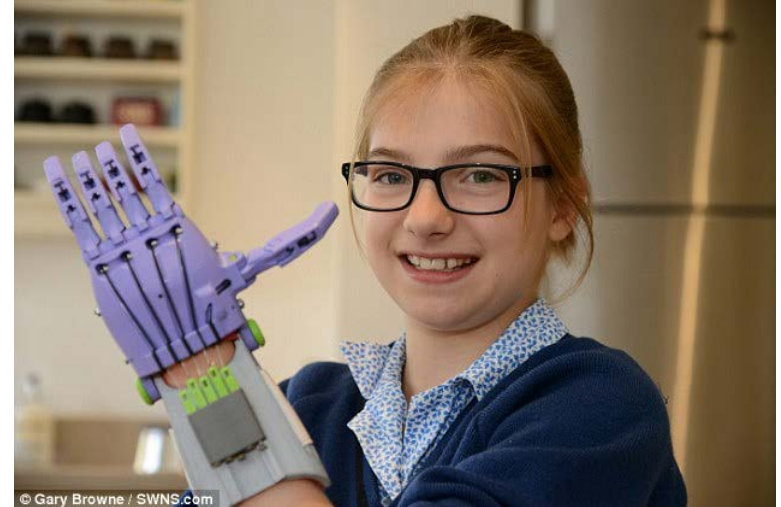


What degree of self care management?



38

And finally- the future?



39

Self care – but not as we know it!

Thank You!